

ANNUAL REPORT 2022



IGNITE!
People Supporting People



326 pieces
of art sold by
the artists of
Kindling Studios

Kindling Studios
artists earned
\$7,600 from
art sales



More than 20 people completed college
classes that apply to their degrees

5 communicators continue
post-secondary education,
working towards the
advancement of their
intellectual goals and
advocating for inclusion
in academia



\$4,920 in Kindling Studios scholarships



5 communicators
advocated for better
understanding within their
families and many have
begun partnering with family
members using AAC



5 people completed
their applications and
earned use of Access
transportation services

More than 25 people
discovered or started
a new job this year



10 communicators started new and exciting
projects, producing music, poetry, and art in
professional creative spaces



10 communicators tried
something new that
scared them, doing it
through the fear and
finding joy in a new
hobby or experience





Letter from the Educational Director

Dearest Community,

When Tina and I met in 2013 I knew our relationship would be long-term, meaningful, and unique. Since then we have worked tirelessly with a talented team to grow IGNITE in what we offer and where we offer it. Over these nearly ten years (time flies!) I've learned how to be a better leader, a better friend, and a better family member.

It is with an immense amount of gratitude and apprehension that I've decided to retire from IGNITE in August 2023. I'm thankful for all the people I've met and all that I've learned, and I'm always nervous about big changes!

It is my pleasure to share that Morgan Tingey-Dias, our current Program Director, will take over as Executive Director in August. She and I have been working on this transition and will continue to collaborate as my time with IGNITE comes to a close. Morgan joined our team as a Tailored Services Mentor in 2016 and quickly showed that she is always eager to learn and grow. She is a competent, experienced, thoughtful person who has my full confidence. Morgan will continue to be supported by Tina, our Board of Directors, Advisors, and community.

After transitioning from my current role with IGNITE I'm excited to focus on growing my consulting business, improving my mental and physical health, and supporting my family.

Where I have found great joy with IGNITE, I also find happiness and fulfillment in working with students and families, collaborating with school districts, and helping people advocate for themselves. I also look forward to remaining on the IGNITE Board of Directors as Founding Director.

I value our community more than I can express and will love to keep in touch – my contact information will remain the same through August of this year, after which you can find me at www.MollyKRearick.com.

A handwritten signature in black ink, reading 'Molly K. Rearick Day'.

Molly K. Rearick Day, EdD
Founder & Educational Director

“Where I have found great joy with IGNITE, I also find happiness and fulfillment in working with students and families, collaborating with school districts, and helping people advocate for themselves.”



Letter from the Clinical Director

In reflecting back, I am reminded of all that we have built in our nine years together. It is truly remarkable to believe that the next time I write this letter, IGNITE! will be in its tenth year. I am grateful to lead our organization in continuing the work which has become an important part of people's lives.

I have spent much of 2022 focused on our key programs, Tailored Services, Independent Living Skills, Kindling Studios, and Communication Support. My favorite part of the work this year has been supporting the development of our Assistant Program Directors. Each Monday, I look forward to our structured time together and have seen tremendous growth in each one and in myself as I learn from them.

In my close work with Kindling Studios, I can say that the studio is bustling. The artists have seen record sales—as Daniel Schneider will proudly announce! Our partnership with Topa Topa Brewing Company resulted in two big pop-up shows that were such a hit. The return of our Annual Sparkler Exhibition and Fundraiser was inspired and felt like a near return to a pre-pandemic “normal.” The “Tranquility” Annual Homegoods Collection flew off the shelves at the Studio Channel Islands Holiday Market.

If you're lucky, there may be a cheese board left!

The studio schedule for 2023 is already chock full of exhibitions and events, so watch for updates to see what these artists come up with next!

Additionally, it was a goal of mine to report that because of IGNITE!, more therapists are trained to treat people who are non-speaking or use AAC to communicate in Ventura County. Blair Guerrero joined me as an Associate Marriage and Family Therapist in the effort to expand counseling offerings. Though slow and steady, we have been doing this work together.

This year is a wrap, but of course, there is much to do as we head into a big shift with Molly's transition and bringing Morgan into the role of Executive Director. I will be there to provide continuity through it all and as we move into the future.

Thank you to everyone. Here's to a fantastic tenth year in 2023!

Tina Ebsen, MA, LMFT, ATR
Clinical Director & Art Therapist

“I am grateful to lead our organization in continuing the work which has become an important part of people's lives.”



Letter from the Program Director

What a quick and momentous year 2022 was! When I reflect on 2022, I immediately think of our fearless leaders Molly Rearick Day and Tina Ebsen and their amazing ability to have guided our team to a successful year despite the challenges we were presented with. They truly took me under their wings and I feel so blessed to have worked so closely with them for the past six years. It is with great joy and gratitude that I get to be a part of the IGNITE team and that I will begin leading the team as Executive Director in August 2023. Molly has created a legacy and quite the shoes to fill! I am excited to continue to grow with IGNITE and to be a part of #PeopleSupportingPeople!

I have the pleasure of knowing each of our programs inside and out, including their successes and challenges. Hannah Clark with Kindling Studios, Chris Clark with Tailored Services, Liz Luviano with Independent Living Skills, and Chelsea Enos with Communication Support all do an excellent job leading their teams in unity to support each individual in completing their goals to be more autonomous, creative, successful, and connected people! All of our Program Coordinators, namely Sara Treptow, José Hernández, Vanessa Perez, and

Nick Gaffaney are literally on the ground supporting their Mentors and people they support in all the areas of their choosing. Our Mentors, Communication Partners, Teaching Artists, and interns are the glue that holds the team together and I am so impressed with each and every one!

I am very excited to begin the new year with a new outlook on individualized support. We are thankful to be able to continue virtual support for all our Regional Center-supported individuals. In 2022 we supported eight people through California's Self-Determination Program and are thrilled to continue offering support in the new year. I am grateful for flexible and diligent team members who are always looking out for the betterment of the community as a whole. The IGNITE team is truly a family and I cannot wait to see what the year brings. Thank you all for your continued support and the love we receive. Happy New Year!

A handwritten signature in black ink, reading "Morgan Tingey-Dias".

Morgan Tingey-Dias
Program Director

“I am very excited to begin the new year with a new outlook on individualized support.”



Letter from Tailored Services

"Success is no accident. It is hard work, perseverance, learning, studying, sacrifice and most of all, love of what you are doing or learning to do." – Pele

The past year at IGNITE has brought many successes, challenges and opportunities for growth. Our staff and their individuals this year persevered through the transition back to post-covid life into their jobs, schools, and communities. Perseverance was the theme of our year. Our individuals we support showed true grit. They never gave up on themselves and developed deep relationships with their one-on-one support staff.

I have so many people to thank this year for their tireless dedication; Molly K. Rearick Day, EdD, Tina Ebson MA LMFT ATR, Morgan Tingey- Dias, Chelsea Enos, Vanessa Perez, Jose Hernandez, Nick Gaffaney, and Trish Mayrina all gave 110% of their energy to all of their individuals and staff. This leadership team worked one-on-one with individuals, supported staff with schedules, research, discovery, as well as prepared and mastered a new clerical system that IGNITE is transitioning to. This team is truly able to handle anything that is thrown their way. It is an honor to know them and work alongside them.

The individuals we support were focused on completing their goals this year!

More than twenty IGNITE individuals completed college classes that apply to their degrees. Five individuals completed their application and were granted use of Access Transportation Services. More than twenty-five individuals earned a new job this year. Thank you so much to all of our staff that supported these individuals to make these goals a reality!

I look forward to an even better 2023 at IGNITE Collective, inc. We are striving to make the program more accessible, relatable, and available to even more individuals as we develop our self-determination program. We hope to offer more social events and outdoor meet-ups next year as we all learn to navigate the COVID-19 pandemic safely.

Thank you to all of our families and staff, for persevering through this year's challenges. Stay safe and healthy in the new year.

Christopher Clark
Assistant Program Director
Tailored Services

“We are striving to make the program more accessible, relatable, and available to even more individuals.”



Letter from Independent Living Skills

It is a privilege to be leading the Independent Living Skills (ILS) team at IGNITE! Being back to work in-person has been so much fun. Amidst the challenges of a nationwide hiring shortage, we were able to make an impact in the lives of people in our community. Whether that was in-person at someone's home, their place of employment, college, or even virtually, we made meaningful connections.

The dedication of our staff has left me inspired to make 2023 the best year for our program. We are building a team of resilient, compassionate, creative people who are committed to making a difference in people's lives. I am pleased to share some highlights from our work together last year. We were able to support people in overcoming fears of operating an oven and achieving competency safely cutting with a knife. We share in the success of someone completing their first semester

at a prestigious university and a few others progressing to become California drivers. I am grateful to our mentors for their dedication to their role and for the critical importance they play in supporting people in their futures.

Thank you to the people and families that are a part of ILS; Your trust in us is priceless and cherished. I look forward to expanding our reach in Ventura County and collaborating with more people to build the lives that they want.

With love and gratitude,

A handwritten signature in black ink, appearing to read 'Liz Luviano'.

Liz Luviano

Assistant Program Director,
Independent Living Skills

I am grateful to our mentors for their dedication to their role and for the critical importance they play in supporting people in their futures.



Letter from Communication Supports

In her book, *all about love*, author bell hooks writes, “when we work with love, it renews the spirit: that renewal is an act of self-love, it nurtures our growth. It is not what you do, but how you do it.”

During the pandemic, the world grew quiet and yet so loud with the clamoring of love. Six feet of separation between a hand, a hug, a heart. We were bereft, humbled and so terribly wounded by that microscopic colonizer. When I reflect on our experiences, and how we move forward out of our collective trauma, it is love that comes through as the only answer. As we move into a new normalcy, it is the way in which we work with love that allows us to do so with courage, compassion, and creativity.

This past year, I have been both honored and humbled to witness the love that exists in our communication partnerships and in the communication program as a whole. I have seen how self-advocacy, the resilience of communication in the face of skepticism and denial of voice, can be a radical act of self-love. In fighting for communication as a human right our individuals, and their

communication partners, shift collective paradigms and change the landscape of inclusion for the non-speaking community.

I am so proud of the partnerships and love that exist in this program. With love, our communicators have held space within academic and intellectual communities, brought their voices into volunteer positions and thriving careers, celebrated meaningful friendships and connections, and have spoken up for inclusion and systemic changes. If it is not what you do, but how you do it, then we are doing it with love.

As Assistant Program Director of Communication Support, it has been my profound honor to be in the presence of so much love this year, and I cannot wait to see where all this love will take us next!

Chelsea Enos

Assistant Program Director,
Communication Supports

“I have been both honored and humbled to witness the love that exists in our communication partnerships and in the communication program as a whole.”



Letter from Kindling Studios

This year at Kindling Studios, we had some wonderful successes to celebrate. The goal this year was to increase our community engagement and partner with local businesses to expand the visibility of the artist's work.

Over the past year we have partnered with the Camarillo Public Library, Tree Lounge Cafe, Topa Topa Brewing Co, Ventura County Arts Council, Studio Channel Islands, Tri-Counties Regional Center, and the Autism Society of Ventura County. All of the artists have been able to showcase their art and continue their outreach to the community.

In February we hosted our 6th Annual Sparkler Art Exhibit and Fundraiser. We raised over \$5,000 in donations, artists sold over \$2,400 worth of art, and we had our biggest turn out yet with about 125 attendees! Artists also sold a total of \$3,000 of art over the course of our two pop-up shows at Topa Topa Brewery in June and October.

I want to thank our Teaching Artists Brittany, Sarah, and Jill, who have worked incredibly hard to support the artists with their endeavors this past year. I would also like to thank our California

Lutheran University intern Estefania, who has done a wonderful job fostering relationships with every artist. Lastly, I would like to acknowledge the work that Cindy Idell has done to continue making our events and relationship with Studio Channel Islands as strong as ever.

I am very excited to see what the future holds for the studio and for all of the artists. Since I joined this wonderful team I have seen so much growth with every artist we work with, and how we can continue to flourish in this already incredible community space.

Hannah Clark
Assistant Program Director
Kindling Studios

“Since I joined this wonderful team I have seen so much growth with every artist we work with, and how we can continue to flourish in this already incredible community space.”



Letter from the Treasurer

Tricky again this year!

Tailored Services, the largest program we deliver, generates \$34.87 per hour in revenue from California's Regional Centers (RCs) and we pay direct workers between \$17 and \$23 depending on experience and skill sets. The challenge is not that we have indirect costs as we really don't. Most of our top people generate more revenue than they are paid and we have little in the way of office space or equipment. The real challenge is in delivering quality staff supervision and then providing feedback to the RCs. We have a level of managers that counsel the direct folks to solve problems and develop strategies. They also do the report

writing required by the RCs as that is a requirement intended to ensure quality and continuity to the benefit of those we serve.

That's the financial headwind we are facing these days along with a good dose of inflation! We greatly appreciate those that have donated to fill the gap as well as everyone involved in Ignite's programs.

Thank you and have a great year!



Chris Rosien
Treasurer & Board Member & Dad

“We implemented a plan to raise wages pretty much across the board.”

SAVE THE DATE FOR

the 7th annual Kindling Studios art exhibit & fundraiser

SPARKLER

A free evening of art, silent
auctions, and fundraising to
support artists with disabilities!

Open to the public.
Theme: "Through the
Looking Glass"

Saturday February 25th
5:00pm - 9:00pm

RSVP @ kindlingstudios.org

2222 Ventura Blvd
Camarillo, CA 93010



LEADERSHIP

Morgan Tingey-Dias

Program Director

Tina Ebsen, MA, LMFT, ATR

Clinical Director

Art Therapist

Molly K. Rearick Day, EdD

Founder & Educational Director,
Communication Trainer
Educational Consultant

Chris Clark

Assistant Program Director,
Tailored Services

Liz Luviano

Assistant Program Director,
Independent Living Skills

Chelsea Loretta Enos, MA

Assistant Program Director,
Communication Supports
Communication Trainer

Hannah Clark

Assistant Program Director,
Kindling Studios

Vanessa Perez

Program Coordinator,
Tailored Services

José Hernández

Program Coordinator,
Tailored Services

Nick Gaffaney

Program Coordinator,
Tailored Services

Sara Treptow

Program Coordinator,
Independent Living Skills

Trish Mayrina

Fundraising Coordinator
Program Coordinator,
Tailored Services

STAFF

Tailored Services

Alec Williams
Amy Akiba
Ashlie Bridge-Jackson
Belinda Wolke
Brittany Rodriguez
Christina Mann
Cynthia Aguilar
David Martin
Eddie Flowers
Emeral Sandusky
Gabriela Ziolkowski
Israel Chavez
Jake Margo
Jovani Liston
Juliette Lerner
Kaylee Haro
Katie Mayo
Karen Gonzalez

Keaton Rogers
Ken Stevens
La'Keyia Smith
Lisa Hernandez
Marielle Ordonez
Morris Carrillo
Sabrina Smith
Sasha Burik
Sonny Diggs
Tom Balsz
Valery Hernandez
Xander Villarreal

Independent Living Skills

Cathy Culley
Dani Heart
Alessandro Keri
Melissa Martinez
Sean Nzeribe

Kindling Studios

Brittany Lambert
Sarah Pinner

EMPLOYEE OF THE YEAR

Our Employee of the Year is a person who provides direct support and goes above and beyond in all areas. In 2022 we were pleased to honor six people who excel in their roles.



Trish Mayrina
Communication Partner,
Tailored Services

In late 2022 Trish transitioned from Communication Partner to Fundraising Coordinator and Program Coordinator. Since 2020 she provided individualized supports in a thoughtful, effective manner and to date Trish has raised more than \$130,000 for IGNITE programs!

NOMINEES:



Sonny Diggs
Mentor,
Tailored Services



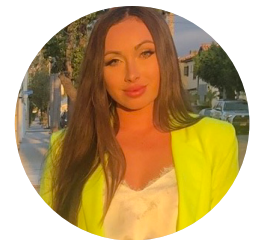
Valery Hernandez
Mentor,
Tailored Services



Melissa Martinez
Mentor,
Tailored Services



Sarah Pinner
Teaching Artist,
Kindling Studios



Emeral Sandusky
Mentor,
Tailored Services

BOARD OF DIRECTORS

We are proud to have a working Board of Directors, meaning each member donates their time and expertise to organizational topics.

A. Louis Dorny, JD

Board Member

Christopher Rosien, MBA

Treasurer

Board Member

Tina Ebsen, MA, LMFT, ATR

Clinical Director

Art Therapist

Board Member

Morgan Tingey-Dias

Program Director

Board Member

Molly K. Rearick Day, EdD

Founder & Educational Director

Communication Trainer

Educational Consultant

Board Member

ADVISORY BOARD

Our Advisors are a group of self-advocates, family members, and professionals who help guide the development of the organization. Many members identify with more than one category.

Steve Andrews

Don Baker & Mary Baker

Amy Brooks, MEd

Shelley Carnes, MS, OTR/L

Kelly Collins

Shauna Farabaugh, CSSE

Alva Gardner, Trainer & Public Speaker

Rolf Henriksson

Cindy Idell

Cecilia Laufenberg, RTC

Claudia Adriana Alvarez Palomo

Ellen M. Rearick, PhD, RD, CCM

Joyce Show, MD

Amanda Frazier Timpson

Lisa Tivens

Peter Tran

Wesley Witherspoon

SUPPORTS

Tailored Services

Independent Living Skills

Kindling Studios

Communication Supports

Human-Centered Accessibility

Summers

Relationship & Sexuality Education

Long-Distance & Outdoor Adventures

Art Therapy

Educational Consulting

Self-Determination Program

TAILORED SERVICES

Our individual community-based Tailored Services supports are available to all adult Regional Center clients in the Self-Determination Program and to traditional clients of Westside, Lanterman, South Central LA, Eastern LA, and Harbor Regional Centers in the following areas:

Higher & Continuing Education

**Employment, Entrepreneurship,
Internships, & Volunteerism**

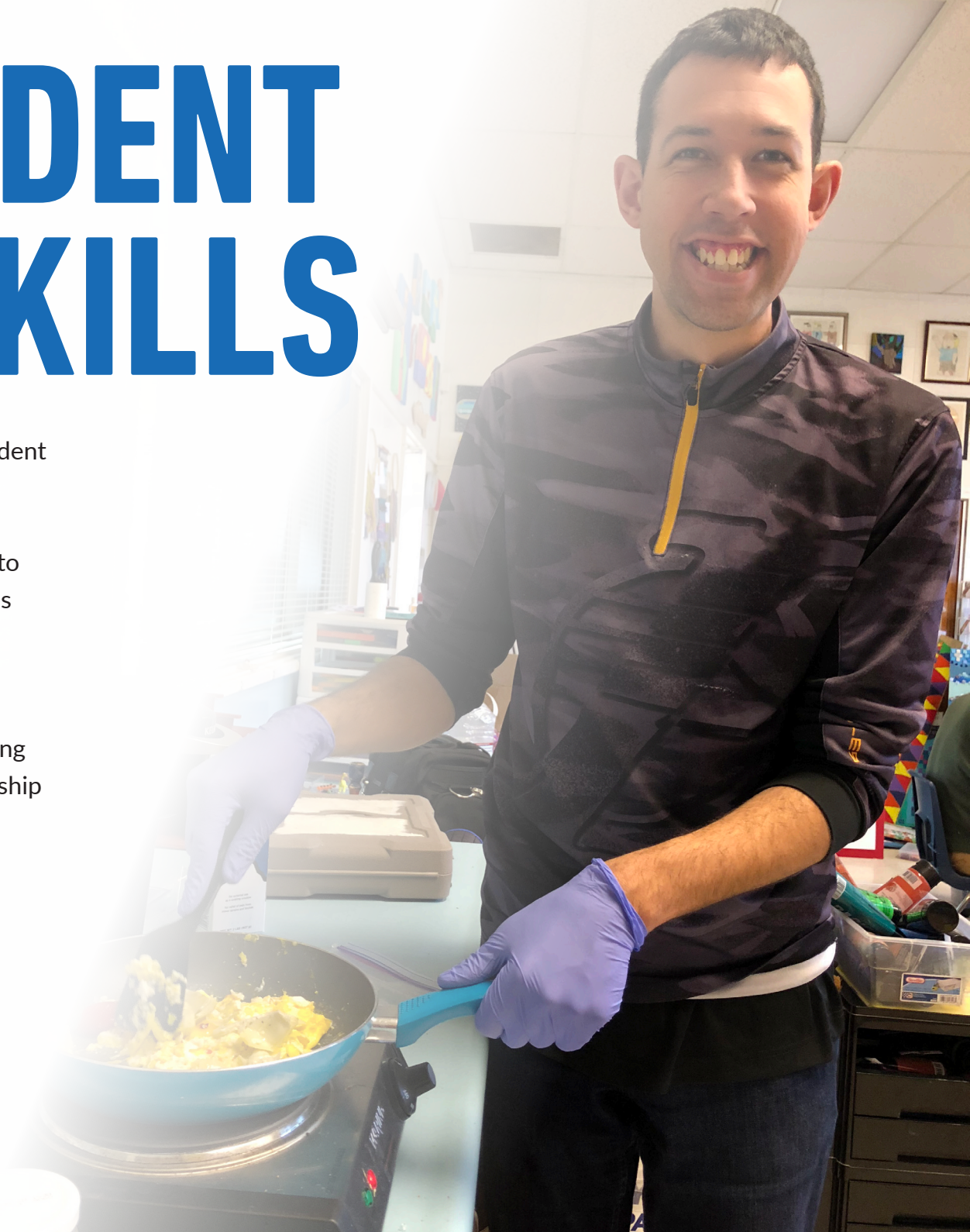
Leading an Inclusive Life

Self-Advocacy



INDEPENDENT LIVING SKILLS

Individual community-based Independent Living Skills (ILS) support is available to all adult Regional Center clients in the Self-Determination Program and to traditional adult clients of Tri-Counties Regional Center in Ventura County. We support people in many areas of life including (and not limited to) healthy living, self-advocacy, continuing education, entrepreneurship, relationship development, and communication.



KINDLING STUDIOS

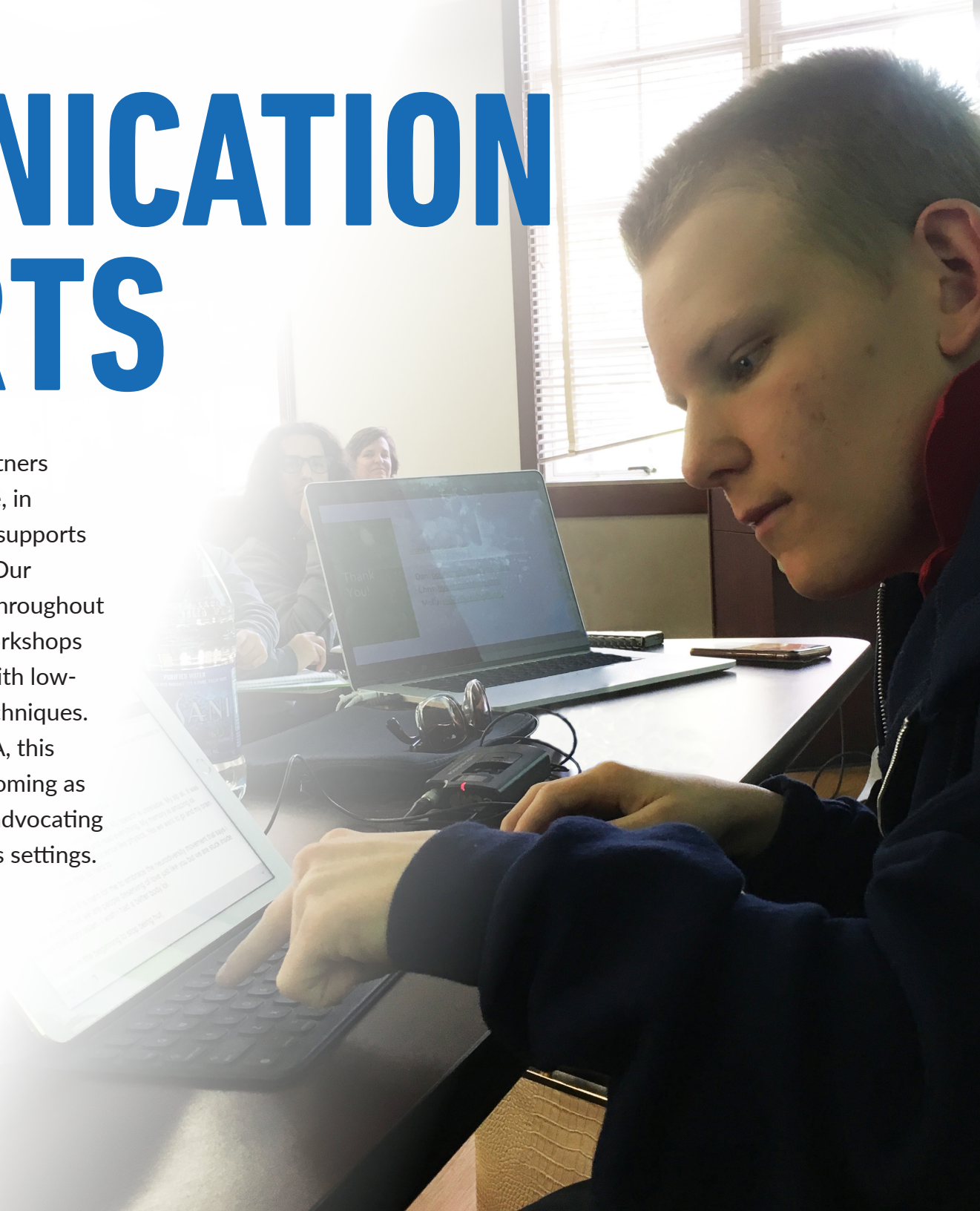
Kindling Studios is a working art studio for entrepreneurs. Based at Studio Channel Islands in Old Town Camarillo, Kindling Studios is home to artists who aim to hone their skills and sell their wares. These artists host an annual “Sparkler” art exhibition and fundraiser, and take part in many community events in and around Ventura County.

Learn more at ***KindlingStudios.org***



COMMUNICATION SUPPORTS

Our trained Communication Partners support people in all areas of life, in combination with other IGNITE supports and/or as a standalone service. Our Communication Trainers travel throughout the state and country to lead workshops aimed at increasing familiarity with low-tech communication support techniques. Led by Chelsea Loretta Enos, MA, this program supports people in becoming as independent as possible and in advocating for communication access across settings.



HUMAN-CENTERED ACCESSIBILITY

Thanks to another generous grant from Ability Central Philanthropy IGNITE is leading a year-long online group focused on Human-Centered Accessibility. This group is designed for anyone who wants to create accessible materials and/or adapt existing materials to be more accessible. Our self-advocate Advisors ensure that our work is inclusive. Workshops begin on January 26th and participants are invited to apply at [**ignitefutures.org/Accessibility-Course**](https://ignitefutures.org/Accessibility-Course).



SUMMERS

Since 2014 our project-based summer programs have been aimed at teaching real-life skills in people's communities. Art, living skills, recreation, communication skills, fitness, food preparation, problem solving, socialization, cultural experiences, adventures, and more! We are eager to continue these offerings in Ventura County and the San Fernando Valley.



RELATIONSHIP & SEXUALITY EDUCATION

IGNITE believes that everyone has the right to real, meaningful relationships, and to be sexual self-advocates. Our experienced team of Relationship & Sexuality trainers is working to bring online and in-person learning opportunities to Los Angeles and Ventura Counties. We are proud to be values-inclusive, meaning we honor individual, community, family, and cultural beliefs while supporting people in talking with their loved ones about values and beliefs. All are welcome!

Welcome Sabrina Smith and Sonny Diggs, both of whom completed Elevatus Training's comprehensive sexuality educator training.



LONG-DISTANCE & OUTDOOR ADVENTURES



Each year we offer adventures for everyone – in 2019 we flew to Hawai'i, traveled to Mammoth Lakes, and backpacked at Dorothy Lake. In 2021 we returned to the mountains and made plans for coming years. Thanks to volunteer guides we are eager to arrange an overseas trip in Summer 2023!

We also provide small group instruction and guidance in rock climbing, paddleboarding, hiking, and more - all in the Eastern Sierra, led by Wilderness First Aid-certified volunteers.

All trips are self-funded by those attending.

ART THERAPY

Tina Ebsen, MA, LMFT, ATR is a Clinical Art Therapist (ATR #16-262) and Marriage and Family Therapist (CA License #98268) specializing in person-centered work with individuals, or family members of individuals with disabilities. Clients who have seen the most benefit are often people with autism, young women and mothers, and those experiencing difficulty “adulting” or finding fulfillment and balance in their lives.

Learn more at ***TinaEbsen.com***



EDUCATIONAL CONSULTING

Molly K. Rearick Day, EdD is an educator, researcher, curriculum writer, university lecturer, communication trainer, and non-profit leader. Her consulting services are available in all geographic areas and focus on inclusion, communication, and transitioning to adulthood. Molly is also available as an Independent Facilitator for participants of the California Self-Determination Program.

Learn more at **MollyKRearick.com**



SELF-DETERMINATION PROGRAM

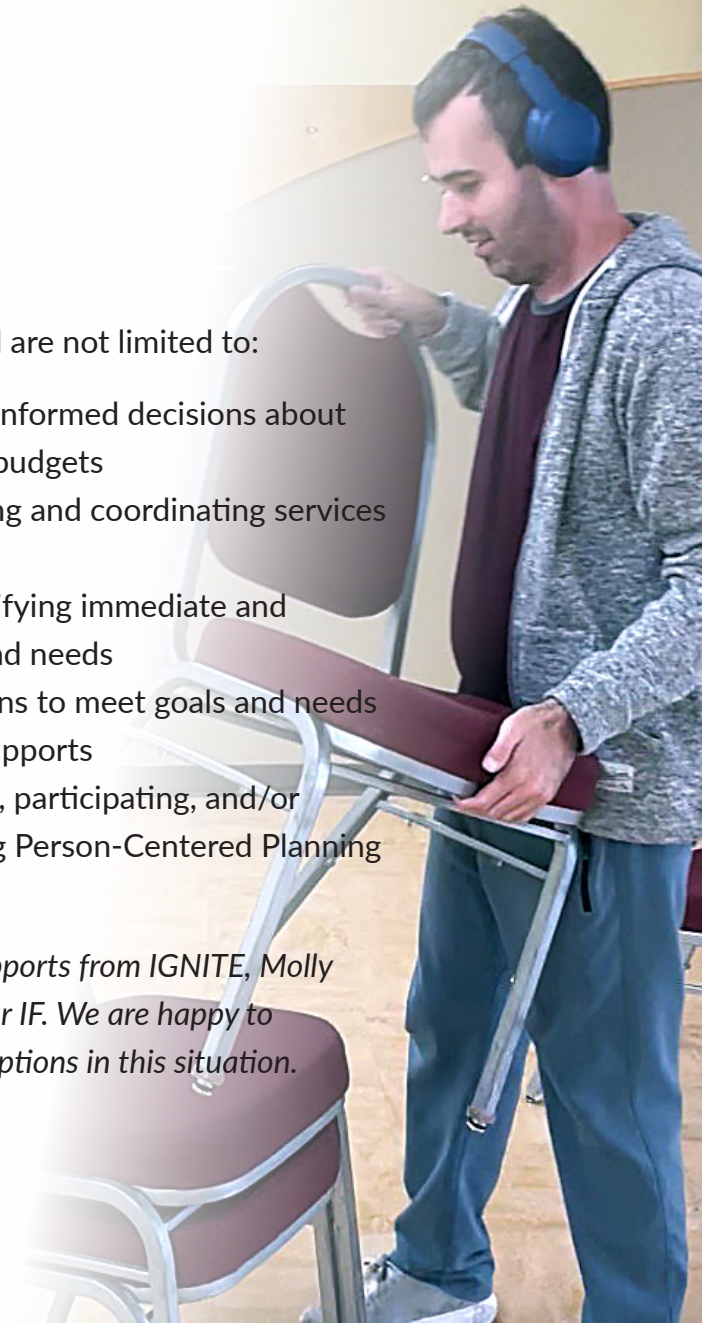
Our Person-Centered Planning team is available to lead plans throughout Southern California and in the Eastern Sierra, in English and/or Spanish, online and/or in person. A Person-Centered Planning meeting explores the unique goals and dreams of a person, and culminates with both a graphic representation and comprehensive written report with specific recommendations. Two of IGNITE's Person-Centered Planners will co-facilitate the meeting, under the guidance of the person seeking supports. Contact Program Director Morgan Tingey-Dias at morgan@ignitefutures.org to learn more.

Independent Facilitator (IF) services are available from Molly K. Rearick Day, EdD (molly@ignitefutures.org) throughout the Eastern Sierra and Southern California.

Supports include and are not limited to:

- Helping to make informed decisions about annual spending budgets
- Locating, accessing and coordinating services and supports*
- Assisting in identifying immediate and longterm goals and needs
- Developing options to meet goals and needs
- Advocating for supports
- Leading, assisting, participating, and/or advocating during Person-Centered Planning meetings

**If you are seeking supports from IGNITE, Molly is unable to act as your IF. We are happy to recommend other IF options in this situation.*



FUNDRAISING

We are honored that many people we support, their families, our staff, and friends choose to donate their birthdays as fundraisers on Facebook.

Contact us to learn how!

Our annual **“Sparkler” art exhibition** will be on February 25, 2023.

Do your usual shopping at **Ralph’s** or via **AmazonSmile**, and IGNITE programs benefit. In 2022 these easy, hands-off techniques earned more than \$500 to support individuals and families.


You shop. Amazon gives.



Ongoing Support from Ability Central Philanthropy

Since 2019 we've been grateful to benefit from generous grants from Ability Central Philanthropy. These grants are aimed at growing and developing our leadership team in order to ensure the sustainability and capacity of IGNITE. In 2020, 2021, and 2022 we brought in twenty self-advocates, family members, and professionals from across the country to present online workshops on topics including mental health, management styles, self-determination, presencing, person-centered culture, relationships and sexuality, disability culture, transition to adulthood, creative self-expression, and more. We also sent more than a dozen up-and-coming IGNITE team members to online learning opportunities including conferences and workshops.

In 2023 we are poised to host twelve online workshops focused on Human-Centered Accessibility. These workshops will teach participants, both IGNITE team members and community partners, how to create accessible materials and adapt materials to make them more accessible. Our Advisors come from a variety of different areas and life experiences.

Learn more at ignitefutures.org/Accessibility-Course



Financials

PROFIT AND LOSS STATEMENT JANUARY 2022 THROUGH DECEMBER 2022

Income		Cost Of Sales	
Tuition - Kindling Studio	22,084.62	Labor	1,076,228.43
Total Tuition	22,084.62	Mileage & Transportation	21,367.24
Services		Supplies	19,771.91
Tailored Services		Total Cost of Sales	1,117,367.58
WRC	427,727.89		
HRC	19,893.35	Gross Profit	-21,979.20
SCLARC	22,604.55		
ELARC	25,489.99	Expenses	
LRC	46,821.72	Bank Fees	-348.32
NLARC	39,965.77	Staff Development	4,063.53
SDP / Private	3,473.44	Rent	6,600.00
Total Tailored Services	585,976.71	Tax and Licenses	250.00
		Insurance	3,576.00
Independent Living Services		Advertising	797.77
TCRC ILS	32,670.00	Total Expenses	14,938.98
Total Independent Living Services	33,215.05		
		Net Profit/(Loss)	-36,918.18
Consulting	30,899.00		
Counseling	53,934.57		
Total Services	703,480.28		
Events	40.00		
Sales	7,519.06		
Grants	47,740.00		
Donations	314,524.42		
Total Income	1,095,388.38		

Financials

BALANCE SHEET AS OF DECEMBER 2022

Assets

Checking, FRB	-7,187.87
PayPal	1,771.27
PayPal other	74.98
Cash	46.26
Endowment, BofA Merrill Lynch	819,263.43
AR - Regional Centers	51,510.52

Total Assets	865,478.59
---------------------	-------------------

Liabilities

SBA EIDL	10,000.00
Grant Obligations	29,206.82

Total Liabilities	39,206.82
--------------------------	------------------

Equity

Unrealized Gains in Endowment	379,853.43
Retained Earnings	483,336.52
Net Income	-36,918.18

Total Equity	826,271.77
---------------------	-------------------

Total Liability & Equity	865,478.59
-------------------------------------	-------------------



IGNITE!

People Supporting People

www.IgniteFutures.org

Hello@IgniteFutures.org

760-648-0450

